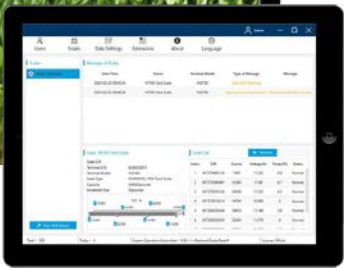
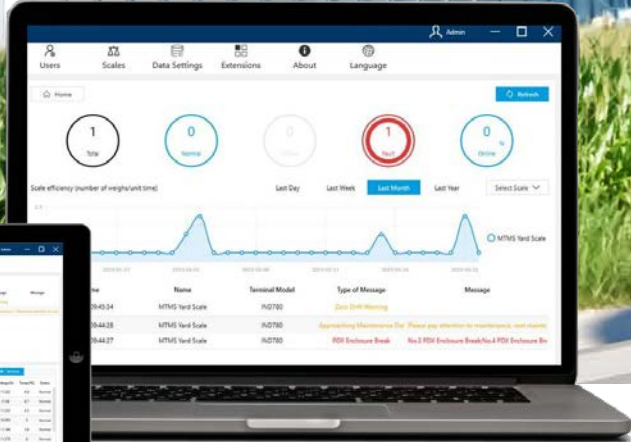


# DataMaster Software

## Electronic Asset Management



METTLER TOLEDO

## Benefits of DataMaster

### Smart, Efficient Asset Management

DataMaster enables operations to improve visibility and centralize data management. With user-friendly displays and an intuitive design, DataMaster simplifies truck or rail scale ownership.

#### Intuitive Management

Monitor the health of multiple scales in real time with a simple-to-use management dashboard.

#### Remote Process Visibility

Track equipment performance via the dashboard summary displays and innovative mapping.

#### Minimal Downtime

Ensure timely detection and troubleshooting of conditions that could otherwise lead to inaccurate weighments.

#### Fraud Detection

Leverage real-time monitoring to better detect and prevent fraud with timely alerts and insight into calibration data changes.

#### Simplified Reporting

Generate customizable reports to streamline weighbridge management and data tracking.

#### One-Click Service

Simplify service through one-click requests, providing valuable context to your service provider to boost first-time fix rates.

## DataMaster

### Technical Specifications

Specifications	DataMaster
Single PC or Network	Installed on local PC, network access to scale indicator
Scale Quantity	Up to 50 vehicle scales
Equipment Requirements	IND780/IND570 indicator + POWERCELL® PDX® load cells
Parameters Monitored	Includes serial number, counts, temperature, voltage, and status
Weighbridge Image	Up to 6 modules for standard weighbridge, up to 10 modules for side-by-side and multi-platform
Weight Distribution	Monitors weight output from individual load cells
Alarms and Email Notification	Includes underload, overload, load cell abnormal, calibration data changed, zero-drift, calibration expired event, maintenance expired event
One-Click Service Request	Enables email-based service requests that include detailed asset information for your local service provider
Standard Report	Generates 10 pre-configured report templates focused on hardware status and usage
Report Designer	Produces standard report templates or design new reports
Remote Indicator	Utilizes IND780 RST: 9.0.04 above, IND570 Standard: 3.00.0003 above
Users and Roles Management	Defaults roles of Administrator and Operator, with custom role creation and assignment of permissions
Intuitive Dashboard	Displays asset uptime and utilization metrics at a glance
Map View of Assets	Digitally replicates site layouts and defines equipment locations



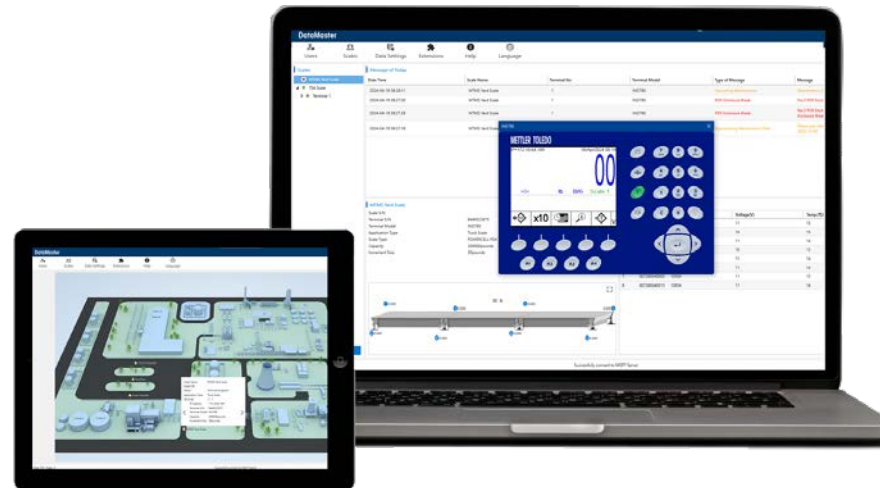
[www.mt.com/VEH-DataMaster](http://www.mt.com/VEH-DataMaster)



# DataMaster

## System Requirements

<b>Intel® Processor</b>	i7, 2.9 GHz higher
<b>Microsoft® Windows®</b>	10 64-bit (required) 16 GB of RAM
<b>Minimum Available Memor</b>	10 GB free on Hard Disk Drive
<b>Video Driver Support</b>	For true 32-bit color, minimum 1400x900 screen resolution (required)
<b>Operating User ID</b>	Standard User Permission (required)
<b>Installation</b>	Administrator (required)
<b>Keyboard</b>	Required
<b>Mouse</b>	Required
<b>Database</b>	SQL Server 2012 R2 Express above (optional)



[www.mt.com/VEH-DataMaster](http://www.mt.com/VEH-DataMaster)

Subject to technical changes  
© 11/2024 METTLER TOLEDO.  
All rights reserved.

Document No. 30632008 A (SD)  
Industrial Division – Marcom  
**METTLER TOLEDO Group**