

TLD950 SingleHead Dimensioner

Setting New Standards



Highest Read Rate

Large optics combined with refined software solutions guarantee best measuring results. The widest dynamic range allows measuring on the most challenging reflective and light absorbent surfaces. The result is the highest read rate for maximum revenue recovery and reduced manual handling.



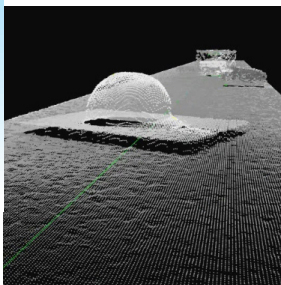
Embedded Processing Power

Software for data processing, alibi data storage and host communication runs inside the dimensioner. That keeps the solution and installation lean and reduces costs. The CPU power provided enables the TLD950 for high-speed applications.



Secure Connectivity

Barcode readers, cameras, scales and sorters can be directly connected to the TLD950. Embedded OCTO DataCapture™ Software manages data merging from all components, transforming your dimensioner into a turn-key data capture solution. Secure connectivity ensures a data safety and system protection.



Design for Service & Uptime

Embedded onboard diagnostic enables health monitoring and ability to identify downtime events proactively. Design quality and service features work together to ensure uptime. The robust design requires very little maintenance.



TLD950 Dimensioner

Superior Measuring Performance

With improved precision, larger optics and a powerful, embedded processor, the TLD950 provides the highest read rates and precision in its class for fully automated material handling as well as maximum revenue recovery.

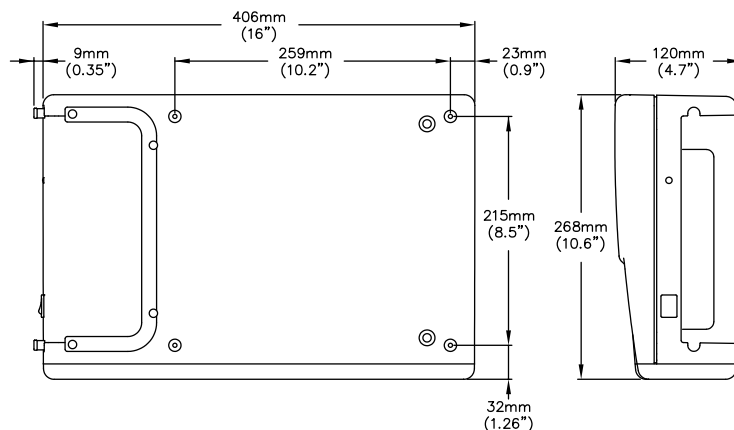
At home in any sorting environment, the TLD950 measures accurately on standard conveyors and cross belts at high speeds. Seamless connectivity to barcode readers, scales, sorters and cameras make the TLD950 the answer to optimizing operational standards and preparing for future investment in local and global hubs.

TLD950 SingleHead Dimensioner

Dynamic Parcel Dimensioning

Features and Benefits

- Large, highly effective optics for maximum precision and read rate
- Powerful embedded processor - no external IPC / computer
- Directly connects with bar-code readers, cameras, scales and sorters
- Measures accurately at high and low speeds
- Forward and reverse measuring
- Detects and reports touching items to aid package flow
- Side by side detection and measuring
- Provides orientation data for correct sorting and tracking
- Secure data connectivity and data transfer to customer host
- Onboard diagnostics for effective service and simple upgrades
- Intuitive user interface for quick system configuration, statistics and status reports
- Certified Legal-For-Trade measurements for objects down to 50 x 50 x 20 mm
- Complies with international technical standards



Legal-for-Trade Approvals

Specifications	NTEP	Measurement Canada	MID
Minimum Size (L x W x H)	2.4" x 2.4" x 1.2"	2.4" x 2.4" x 1.2"	50 x 50 x 20 mm
Maximum Size (L x W x H)	157.4" x 48" x 36"	158" x 36" x 36" 158" x 47" x 28"	4000 x 900 x 900 mm 4000 x 1200 x 700 mm
Certified Scale Value (d)	d=0.2" (L x W), d=0.1" Height	d=0.2" (L x W), d=0.1" Height	d=5 mm (L x W), d=2 mm Height
Accuracy	0.2" (L x W), ± 0.1" Height	0.2" (L x W), ± 0.1" Height	± 5 mm, (L x W), ± 2 mm Height
Object Shape	Cuboidals		
Object Surface	All surfaces		
Belt Speed	0 - 655 ft/min	0 - 655 ft/min	0 - 3.3 m/s
Speed Variable	Variable speed from 0 - 3.3 m/s (655 ft/min)		
Conveyor Type	Flat conveyor belt		
Belt Width	600 - 1200 mm (24" - 48")		
Flow	Singulated flow, non-touching; Non-singulated, non-touching; Non-singulated, touching*		
Display	Host output, OCTO CSM, LFT display, HDMI monitor		
Power Supply	24 VDC, 100 VAC to 240 VAC		
Sealing	Electronic sealing		

*Minimum gapping required

Enclosure / Environment	
Housing Material	Aluminium
Operating Temperature	-10 to +50°C (14 to 122°F), start condition 0°C (32°F)
Humidity	Up to 100%, non-condensing
Level	-2000m / NN Indoors
Aperture angle	82°
Power	24 VDC ± 15%
Power Consumption	40 W
Fuse	ATO/FKS 4A
Product Dimensions (L x W x H)	12 x 41 x 26 cm (5" x 16" x 10")
Weight	9 kg (20 lbs)

Regulatory Compliance / Approvals	
Light Source	Laser diode, red, wavelength 660 nm
Laser	Class II (2)

Data Interfaces	
Connectivity	HDMI, 6 x USB, 2 x Ethernet, Tacho In, Tacho Out, Serial, Binary I/O

METTLER TOLEDO Group

Transport and Logistics
Local contact: www.mt.com/transport

Subject to technical changes
©02/2022 METTLER TOLEDO. All rights reserved
30526933

www.mt.com/TLD950

For more information