

## Optimize Operations Improve Flexibility



### Versatility

Bakeries, deli counters, floral departments and backrooms: FreshKiosk offers a multitude of applications that serve to improve customer experience, stream-line operations and enhance data collection. Ticket printing, label printing, kiosk terminal info sharing, digital marketing, and ordering solutions are just a few of its capabilities.



### Compact Design

FreshKiosk offers streamlined ticket printing functionality in a compact design. Benefit from dynamic real-time product and pricing information and asset management with a customizable and intuitive customer interface.



### Enhanced Printing

The FreshKiosk provides a variety of printing options to suit your retail counter needs, including a 2" label printer, a 3" linerless printer, remote mounting, and dual printer capability. This flexibility enables the FreshKiosk to adapt to changing printing needs based on application.



### Intuitive Software

The user interface of the FreshKiosk offers simplified operation with FreshPro software, which is user-friendly for both new employees and experienced operators. Less training time means lower costs and more time for high-quality customer service.



## FreshKiosk

FreshKiosk is a fresh, future-proof way for food retailers to meet the needs of today's most demanding ticket printing and customer kiosk applications. From cake ordering solutions in the bakery, to bouquet ticket printing for the floral department, to deli queuing, to backroom prepackaging solutions, FreshKiosk offers a solution to an array of grocery retail needs without a weighing platform.

The FreshKiosk also runs with secure FreshPro software, enabling total visibility and data across your enterprise. Streamline information and make real time decisions with all equipment running on FreshPro.

# Technical Data

## FreshKiosk

### Operator Touchscreen Display

- 12.1" (30.7 cm) capacitive touchscreen with a bright, high-contrast TFT LED backlit display
  - Screen resolution: 1024 x 768 pixels
- Continuous tilt angle adjustments (stepless)
- Optional 15.6" (39.6 cm) capacitive touchscreen with a bright, high-contrast TFT LED backlit display
  - Screen resolution: 1366 x 768 pixels
- Optional bar code scanner

### Customer Display (Optional)

- 12.1" (30.7 cm) customer display with bright, high-contrast TFT LED backlit technology
  - Screen resolution: 1024 x 768 pixels
- 15.6" (39.6 cm) customer display with bright, high-contrast TFT LED backlit technology
  - Screen resolution: 1366 x 768 pixels

### Printing

- Printing width: 2.2" (56 mm)
- Paper width: 1.7 – 2.4" (44 – 62 mm)
- Printing speed: up to 5.9"/sec (150 mm/sec)
- Print resolution: 8 dots/mm
- Separate paper feed button
- Pole-mounted printer options:
  - 2-inch (50.8 mm) ticket printer
  - 2-inch (50.8 mm) label printer
  - 2-inch (50.8 mm) linerless printer
  - 3-inch (76.2 mm) linerless printer
- Remote-mounted (up to 4m) printer options:
  - 3-inch (76.2 mm) label printer
  - 3-inch (76.2 mm) linerless printer
- Dual printer capability

### Processor/Memory/Data Storage

- Intel® Dual Core N3350 1.1 GHz Processor (2.4 GHz in turbo mode)
- 4 GB DDR3 RAM
- 64 GB Flash Memory

### Operating System

- Linux openSUSE 15 64-bit
- Microsoft Windows® 10 IoT Enterprise 64-bit

### Scale Software

- FreshPro application

### Power Rating

- 100 – 240 V AC, 50 / 60 Hz
- Average consumption during operation: ca. 26 W

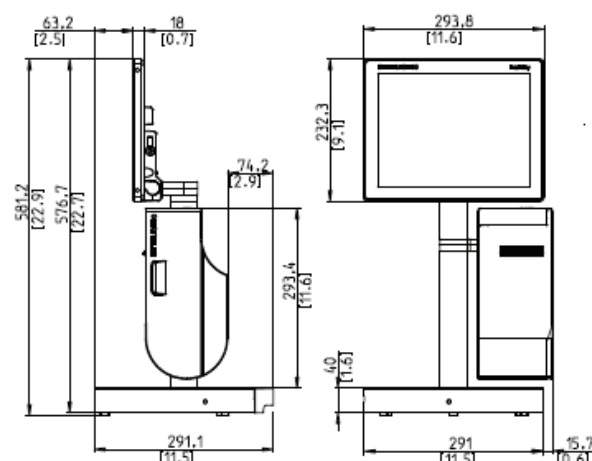
### Interfaces and Protocols

- Ethernet interface (10/100)
- 1 x RJ11 interface for controlling the cash register drawer
- 2 x USB 2.0 ports
- 1 x USB 3.0 port
- 1 x RJ50 port for the external printer
- Integrated wireless solution for wireless data transmission in accordance with standard IEEE 802.11 ac/a/b/g/n(2T2R), with 2 x 2 MIMO

### Housing

- Impact-resistant housing made of die-cast aluminum

Intel is a registered trademark of Intel Corporation in the U.S. and/or other countries. Microsoft® and Windows® are registered trademarks of Microsoft Corporation in the United States and/or other countries.



[www.mt.com/retail](http://www.mt.com/retail)

For more information

**METTLER TOLEDO Group**

Retail Division

Local contact: [www.mt.com/contacts](http://www.mt.com/contacts)



Subject to technical changes

©07/2024 METTLER TOLEDO. All rights reserved

MarCom RET