

Making the Bottom Line Sparkle with GWP[®] Verification

Whether you work in a laboratory, on a production line, or in a diamond mine: Expert advice can lead to more secure processes and enhanced profits. Canadian diamond producer Diavik wanted to know how accurate their balances weigh and whether they have to be calibrated more often – or less.

Canadian diamond producer Diavik turned to a METTLER TOLEDO service advisor and asked: “How accurate are our balances, actually?” The service advisor answered with GWP[®], the global weighing standard.

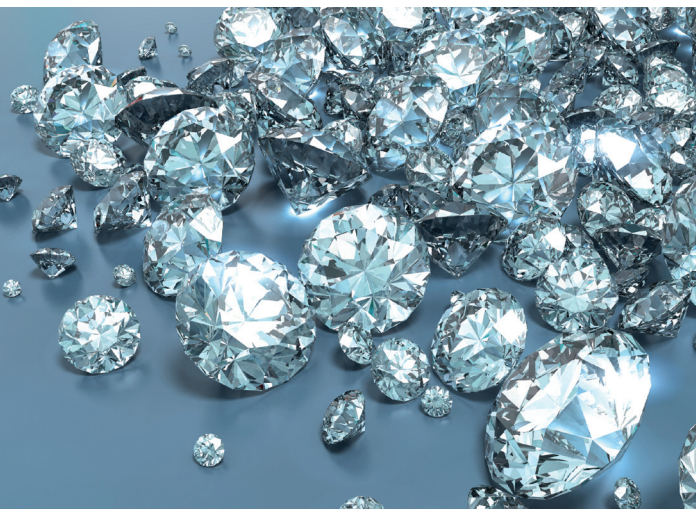


Performance Verification

Reliable evidence

Ensuring weighing accuracy

METTLER TOLEDO



GWP made Diavek's bottom line sparkle.

GWP® Verification assessment for Diavik's weighing equipment

Diavik operates under harsh conditions to produce some of the world's most sought-after gemstones. And while they tested their balances regularly, they lacked a systematic approach to determine whether they were testing too little, too much or whether the balances met their stated business goals in the first place.

Diavik has 27 balances in place. The customer wanted to know how accurate they were weighing and whether their balances have to be calibrated more often – or less. A thorough GWP Verification assessment by METTLER TOLEDO experts revealed: A few balances approached values up to 30 percent

above the accepted tolerance. Their balances could not meet Diavik's accuracy needs even in the best possible setup and configuration, as well as under perfect environmental conditions.

Weighted Towards Profit

So they were at a turning point: To change their process and make room for larger tolerances, or to invest in new weighing equipment. Diavik decided to invest in new devices. Consequently, they installed updated, GWP approved balances and are reaping the rewards. The improvements from the new balances were expected to quickly pay for both Diavik's service and capital investments, and make their bottom line sparkle.

Educating for Outcome

Whether working with a company long-term or meeting them for the first time at a seminar, the goal for METTLER TOLEDO is the same: To provide them with tailored information which helps our customers minimize costs while maximizing product quality.

Using the GWP standard, it means encouraging customers to evaluate their business before buying equipment. As the situation at the Diavik Diamond Mine has illustrated, weighing equipment can be

in working order yet unable to produce results if it cannot withstand the production environment, weigh within tolerances, or be easily maintained.

Whatever your most pressing questions, METTLER TOLEDO and Good Weighing Practice™ can provide education so that you will be able to respond to your management or regulators with scientifically sound arguments.

► www.mt.com/gwp-ver-jewelry

Mettler-Toledo AG

Laboratory Division
Im Langacher
CH-8606 Greifensee, Switzerland

Subject to technical changes.
© 01/2013 Mettler-Toledo AG
Printed in Switzerland
Global MarCom Switzerland